

ASTUT-1511S-PC / ASTUT-1811S-PC

ASTUT series

Intel® Atom™ Processor D2550 All-in-One Panel PC with Riser Card Expansion



Fanless



Flat Bezel



F Panel
IP65



15" 18"

I/O View



ASTUT-1511S-PC



ASTUT-1811S-PC

Features

- Dual-Core Intel® Atom™ D2550 processor
- Projected capacitive touch screen
- IP65 waterproof front-panel protection
- 3mm glass, vandal-proof touch screen



- Easily accessible HDD space



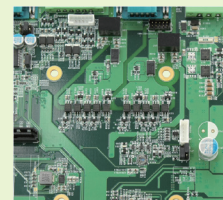
- 12V~36VDC power input
 - Input polarity reversed protection
 - Continuous short
 - Over load circuit protection



- One PCI expansion slot



- Isolated RS-232/422/485



ASTUT-1511S-PC / ASTUT-1811S-PC

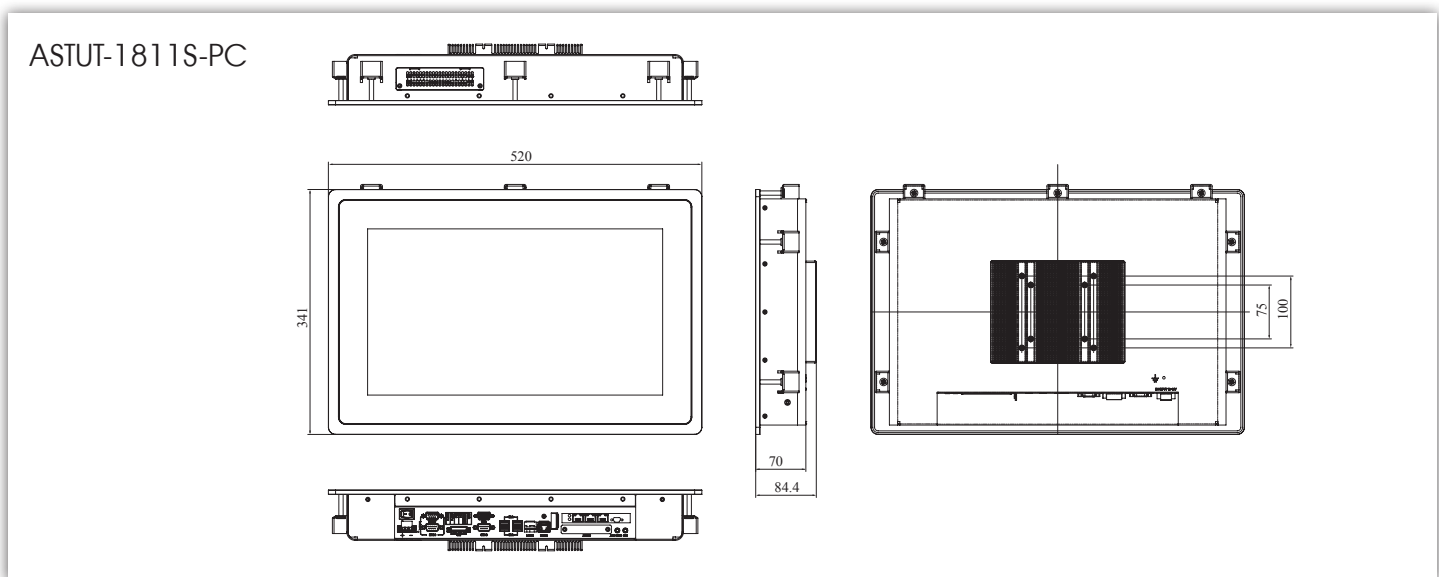
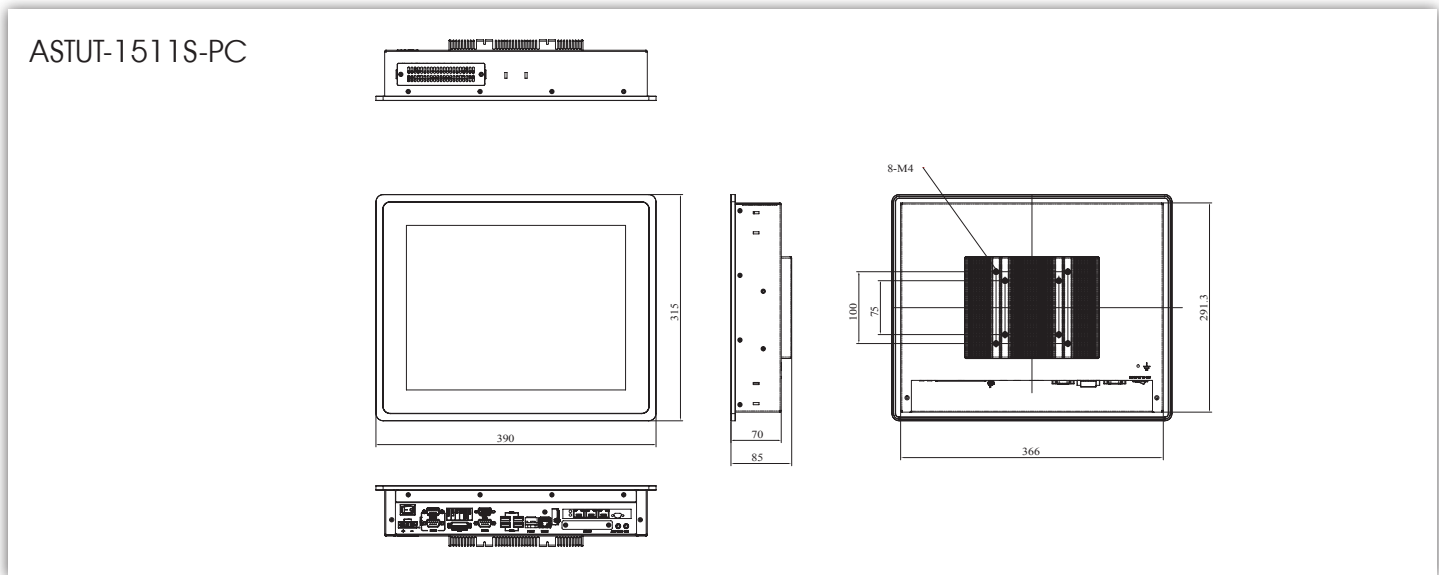
Specifications

Model No.		ASTUT-1511S-PC	ASTUT-1811S-PC
Display & Touch Screen	Display Size	15" TFT-LCD	18.5" TFT-LCD
	Max. Resolution	1024 x 768	1366 x 768
	Luminance (cd/m ²)	400	300
	Contrast	700:1	1000:1
	Max. Color	16.2M	16.7M
	View Angle (H°/V°)	160/140	170/160
	Backlight Lifetime(hrs)	50000	50000
	Touch Type	Projected capacitive	Projected capacitive
	Touch Interface	USB	USB
	Light Transmission (%)	86	85
	Point of touch	2	2
I/O Interface	USB 3.0	0	0
	USB 2.0	4	4
	RS-232/422/485 Selectable under BIOS	2	2
	RS-232	1	1
	LAN	2x GbE	2x GbE
	Additional Graphics	VGA	VGA
	Audio	Mic-in / Line-out	Mic-in / Line-out
	Digital I/O	2in / 2out	2in / 2out
	Power Connector	3-pin terminal block	3-pin terminal block
	Power Button	Rock switch	Rock switch
	Mechanical	Dimensions (mm)	390 x 315 x 85
Net Weight (kgs)		6.5	8.5
System	Processor	Intel® Atom™ Processor D2550 (1M cache, 1.8GHz)	Intel® Atom™ Processor D2550 (1M cache, 1.8GHz)
	Memory	2x DDR3 1066 SO-DIMM, up to 4GB	2x DDR3 1066 SO-DIMM, up to 4GB
	Thermal Design	Fanless	Fanless
	Membrane Control	None	None
	Built-in Speaker/MIC	None	None
Expansion	Internal Expansion Bus	1x Mini PCI-E half/full size	1x Mini PCI-E half/full size
	Expansion Slot	1x PCI	1x PCI
	Wireless	None	None
Storage Space	HDD	1x 2.5" SATA	1x 2.5" SATA
	Removable	1x CFAST slot	1x CFAST slot
Power	Power Input Range	12V~36V DC	12V~36V DC
Construction	Chassis Material	Black aluminum front bezel and black steel back cover with aluminum heat-sink	Black aluminum front bezel and black steel back cover with aluminum heat-sink
	Color (Front/Back)	Black / Black	Black / Black
	IP Rating	IP65 front bezel	IP65 front bezel
	Mounting	Panel mount and VESA 75x75, 100x100 mm	Panel mount and VESA 75x75, 100x100 mm
Environment	Operating Temperature	0°C ~ 50°C	0°C ~ 50°C
	Storage Temperature	-20°C ~ 60°C	-20°C ~ 60°C
	Storage Humidity	10%~90% (non-condensing)	
	Certification	CE/FCC Class B	
	Operating System Support	Windows Embedded Standard 7, Windows 7 Pro for Embedded	

1 Stainless Steel Panel PC | 2 All-in-one Panel PC with Riser Card Expansion | 3 Compact Panel PC | 4 Outdoor Panel PC | 5 Heavy-duty Industrial Panel PC | 6 ARM-Based Panel PC | 7 ARM-Based HMI

ASTUT-1511S-PC / ASTUT-1811S-PC

Dimensions



Ordering Information

ASTUT-1511S-PC	15" Flat Panel Design Panel PC with IB809, Intel® Atom™ Processor D2550 1.86GHz, 4GB DDR3 SO-DIMM, 320G HDD, projected capacitive touch, w/o adaptor
ASTUT-1811S-PC	18.5" Flat Panel Design Panel PC with IB809, Intel® Atom™ Processor D2550 1.86GHz, 4GB DDR3 SO-DIMM, 320G HDD, projected capacitive touch, w/o adaptor
Power adaptor (optional)	AC 90V~240V input, 12V DC output 84W power adaptor IBASE P/N: A005PS084W0050000P