

10.1" Industrial Tablet IP65 N100

FT101N100ITCAPOB

- Intel® Processor N100 QuadCore CPU
- 8GB RAM memory, 128GB eMMC storage
- Pre-installed Win 10 OS (without license - purchase separately)
- Rechargeable lithium battery, 7.4V/7000mAh (8.6+ hours operation)
- Kastus® 24/7 anti-viral & anti-bacterial coating
- Anti-glare surface treatment (chemical etching)
- 1000 cd/m² brightness (suitable for outdoor use)
- 10-Finger-multi touch capacitive touch panel
- 1.8mm cover glass with 7H surface hardness (IK08)
- Optically bonded touch panel to LCD panel
- Complete IP65 water- and dust proof
- Integrated W-LAN & Bluetooth 4.2
- Built-in front & back camera and microphone
- Integrated barcode scanner & fingerprint scanner
- 2 year guarantee (24/7 usage)



Metroclick's industrial (ruggedized) tablet is the perfect touch solution to be used as a hand-held device (or mounted pc) while performing tasks on the industrial floor or in rough environments. It is completely IP65 water- and dust proof (with all covers closed), has a 10-finger capacitive multi touch panel and 24/7 anti-viral & anti-bacterial coating by Kastus®, with a kill rate of >99% against surface bacteria, traditional viruses, and human coronavirus (3-in-1 protection).

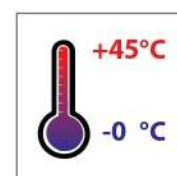
The rechargeable lithium battery will easily get you through your workday when needed, especially in an indoor or semi-indoor environment such as a factory floor or office. The battery lifetime depends on the brightness and active usage (it can last up to 8.6 hours of operation, without any stand-by mode).

The tablet has an optically bonded touch panel, which will improve the stability, reduce the reflection, increase the viewing angle, and enhance the perceived brightness. It also provides resistance to dust particles and shows a better image in general.

The device is powered by Metroclick's industrial Alder Lake-N mainboard. It is driven by the powerful Intel® N100 QuadCore processor with up to 3.40 GHz clock frequency. It is equipped with 8GB RAM and 128G storage.

Due to its robust design, the tablet is particularly suitable for use in harsh environments such as industrial, rough and outdoor areas. Besides the mobile solution, the device can also be used as a permanently installed control panel. Windows 10 is pre-installed on the device but no license is included, this can be purchased separately (available under accessories).

Legend / Notes	
Applicable to version 1	(v1)
Applicable to version 2	(v2)
Applicable to all Versions	None



Product name	10.1" Industrial Tablet IP65 N100
Model number / EAN number	FT101N100ITCAPOB / TBD
China: Article Code (European Article Code Release date (D/M/Y))	Western Global Article Code (European Article Code Release date (D/M/Y)) Western 11
01/09/2022303515944	

IP Rating	
IP65	

LCD Panel	
Screen diagonal (Inch/cm)	10.1/25.65
Display active screen size (cm)	21.70×13.60
Aspect ratio	16:10
Physical resolution	1920×1200
External Maximum showable resolution - Micro HDMI	1920×1200
Colours displayed	16.7M
Brightness (cd/m²) - after incl. touch panel & optical bonding	1000
Contrast	800:1
Typical reaction time Tr / Tf (ms)	25 / 25
Visual Angle horizontal / vertical (°)	178 / 178
Backlight / Backlight Lifetime (hours)	LED / 50,000

Operation / Mechanical	
Operating Temperature (°C)	0 ~ +45
Humidity Range (RH)	10% - 90%
Net weight (kg)	1.20
Gross weight (kg)	1.70 (incl. cartonnage)
Housing material	Plastic Case, Silicone Rubber Frame
Housing (mm) L × W × H	280.3 × 198.3 × 36.0
Mounting	VESA 75 4x M3.5 screw thread

Included in the Delivery	
Power Supply (see Power section)	Short Installation Manual
Plastic Screen Protector	VESA 75 back plate (attached to tablet)
Battery (inside)	

PC System	
CPU	Intel® Processor QuadCore N100
Graphic GPU	Intel® UHD Graphics
Audio	Realtek ALC269 Audio CODEC
Memory	8GB LPDDR5
Storage	128GB UFS2.1
Network	1x Realtek PCIe GB LAN 8111G; Wi-Fi 802.11ax (see Wi-Fi specifications)
Bluetooth	Bluetooth 5.2 (high speed data transfer)
Microphone	Integrated (behind cover glass)
Preinstalled OS	Windows 10 IoT LTSC 2019 Entry (without license, purchase separately)

Touch Panel		
Touch Technology		Projected Capacitive 10-Point Multitouch
Touch Connector		USB
Touch Life (Contacts)		Unlimited
Surface Hardness		7H
Surface Treatment		Anti-glare (chemical etching)
Glass Strengthening		Chemically Strengthened
Additional Coating		Kastus• 24/7 Antimicrobial Coating (3-in-1)
Touch Firmware	Included	Works with fingers, gloves & in rainy conditions
	Download from website	Works with capacitive touch stylus

Power		
Power Indicator		Green / Red LED
Built-in Battery		Rechargeable Lithium Battery, 7.4V/7000mAh
Power Supply		100-240V ACDC active switching; 12V DC-Out
Working Power (V)		12
Power Consumption / Active Working Time (w/o stand-by mode)	25% brightness, idle mode (indoor / semi-indoor)	6W / 8.6 hours minimum
	50% brightness, 50% full usage (semi-indoor)	10W / 5.2 hours minimum
	100% brightness, 100% full usage (outdoor)	15.5W / 3.3 hours minimum
Stand-By Consumption (W)		<1

External Connectors	
1x 12V DC-In (to recharge)	1x Micro HDMI 1.4 (class type D)
1x USB 3.0	1x USB 2.0
1x Micro USB 2.0	1x USB Type-C
1x Headphone port - Ear out only (3.5mm)	1x 10/100/1000Mbit RJ45 Port
1x COM port DSUB9 (RS232)	1x Micro SD card slot (TF - TransFlash)

LED light indicator

**1000 cd/m² brightness
(suitable for outdoor use)**

**Integrated microphone
(behind cover glass)**

**10-Finger-multi touch
capacitive touch panel**

**Anti-glare chemical etching with
anti-viral & anti-bacterial coating
(active for the entire product lifecycle)**

Front camera

**Rugged IP65 silicone
rubber frame**

**IP65 silicone
rubber covers**

Front

**Optically bonded touch
panel to LCD panel**



Peripherals

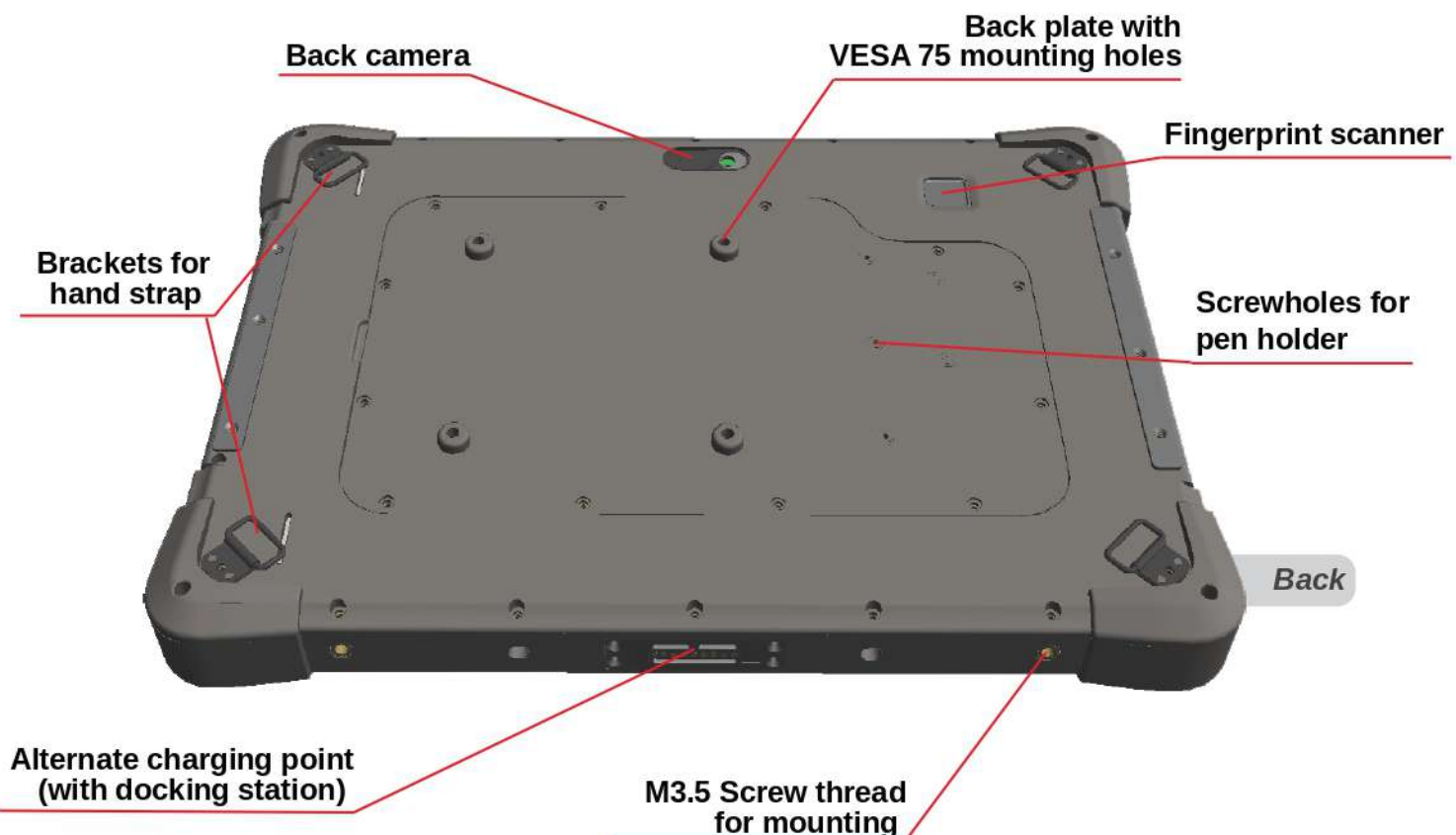
Wi-Fi & Bluetooth Specifications (AC 7265)	
Product Name	Intel® Dual Band Wireless-AC 7265
Band Channels	2.4GHz and 5GHz
Max speed	867 Mbps
Wi-Fi Certified	Wi-Fi 5 (802.11ac)
Compliance	FIPS, FISMA
TX/RX Streams	2x2
Bluetooth	Bluetooth 4.2

Fingerprint Scanner Specifications (MB-X4)	
Purpose	Register & unlock device (Windows 10)
Pixels / resolution	88×88px / 508 DPI
Storage capacity	100 unique prints (multiple fingers & accounts)
Unlocking time	<1s
FRR / FAR	<2% / <0.002%
Communication interface / UART	SPI / 57600
Additional features	build-in "Smart Learning" algorithm, allowing fingerprint matching to be faster over time Accepts 360° (degrees) fingerprint matching

OPTIONAL (not included in standard version) GPS Specifications (UB-118)	
Product Name	UB-118
Chipset	High performance BD2/GPS chipset
Frequency	GPS L1 1575.42 MHz / BD B11561.098MHz
Power Consumption	100mW
TTF (Time to first fix)	Hot start: 1s Cold start: 32s
Accuracy (position)	Autonomous <2.5m RMS DGNSS <1m RMS
Accuracy (velocity)	GPS(+BDS) 0.1m/s RMS BDS 0.2m/s RMS
Accuracy (time)	100ns
Sensitivity (acquisition)	BDS -145dBm GPS -147dBm
Sensitivity (tracking)	BDS -160dBm GPS -162dBm
Protocol	NMEA 0183 (compatible with BDS)
Maximum altitude	< 50,000 meter
Maximum velocity	< 500 m/s
Maximum acceleration	< 4G

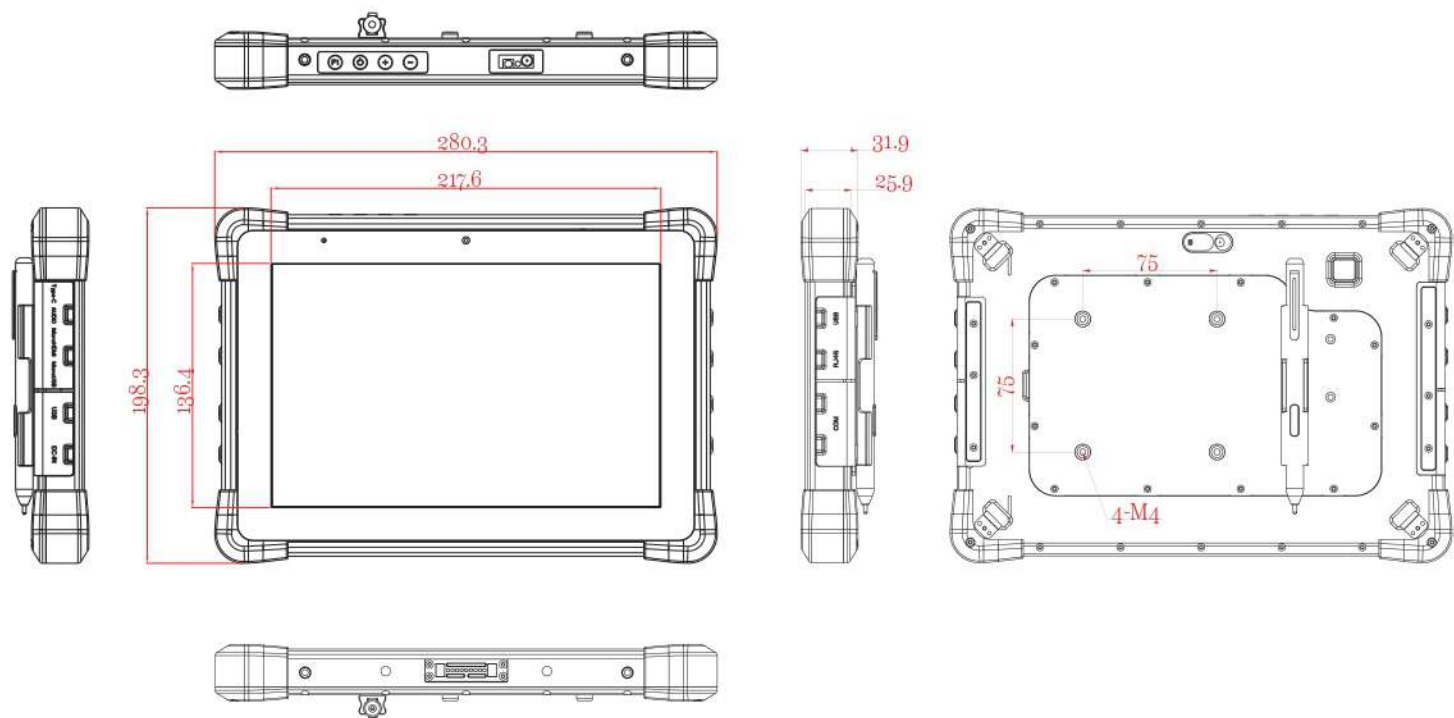
Barcode Scanner Specifications (N4680)	
Product Name	Honeywell N4680 Decoded 2D Scan Engine
Sensor	640×480 CMOS, 60 frames per second
Illumination Wavelength	Warm white LED with CCT 3000K
Aiming Wavelength	630nm Red LED
Scan Angle	Roll: 360°, Pitch: ±50°, Skew: ±50°
Field of View	Horizontal ±20°, Vertical ±15°
Motion Tolerance	6 m/s
Maximum image capture rate	120 frames per second
Supported Symbolologies	1D, 2D barcodes, OCR, Poorly printed & on-screen bar codes
Typical Depth of Field	C39 36mm - 747mm (5-10-20 mils) 100%UPC-A 46mm - 390mm (13 mils) C128 33mm - 598mm (5-10-20 mils) PDF417 42mm - 490mm (7-10-20 mils) QR-Code 40mm - 367mm (7-20 mils) Data Matrix 40mm - 182mm (10 mils)

Camera Specifications (front & back)		
Camera	Front (screen side)	Back
Pixels	2MP (200W)	5MP (500W)
Pixel Size	1.75*1.75um	1.4*1.4um
Image Resolution	1600×1200	2592×1944
Image Transfer Rate	30 frames/sec	15 frames/sec
Lens Size	1/5 inch	1/4 inch
Optical Field of View	60°	73°
Glass finish (in front of lens)	Polished glass	
Output Formats	RAW RGB, RGB 565/555/444, CCIR656 YUV422/420, YCbCr422, and compression	





Drawing



Tolerance: ± 1mm

* Capacitive Touch Stylus & Holder not included in standard version (for reference only)

Revision History

Update Notes:

<u>Version:</u>	<u>Changes:</u>
v1	- First version

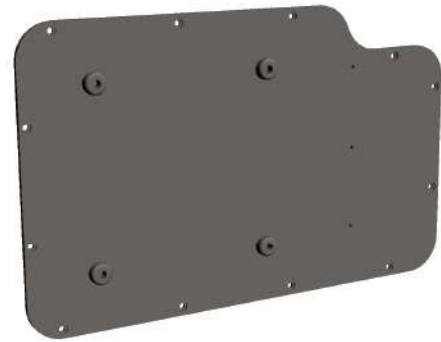
Errata and technical modifications reserved

Global Headquarters Pyramid Computer GmbH Bötzingen Straße 60 D-79111 Freiburg, Germany www.pyramid-computer.com +49 761 4514 0 sales@pyramid.de	
APAC Headquarters faytech Tech. Co., Ltd. Fl. 2, Bldg. 8, Winlead Intelligent Park Shenzhen, China www.faytech.com +86 755 89580612 sales@faytech.com	
USA Office faytech North America 237-239 West 29th Street, Ground Floor NY 10001 New York, USA www.faytech.us +1 646 843 0877 sales@faytech.us	
Japan Office faytech Inc. 6th floor CI building 1-7-11, Higashinohonbashi, Chuoku Tokyo, Japan www.faytech.com +81 3 5809 3937 sales@faytech.jp	
India Office Faytech Private Limited 3/16 Shanti Niketan,110021 New Delhi, India www.faytech.com +91 11 49707436 sales@faytech.co.in	
South-Korea Office Deutsche Faytech Korea #501, GBSA, 107 Gwanggyoro, Yeongong-gu, Suwon-si, 16229 Gyeonggi-do, Republic of Korea www.faytech.kr +82 10 3479 1815 sales@faytech.kr	

Included Accessories

VESA 75 back plate (attached to tablet)

Product name				VESA 75 back plate			
EAN number				N/A			
Global Article Code	European Article Code	Release date (YYYY)	Version	Global Article Code	European Article Code	Release date (YYYY)	Version
-	-	23/07/2023	v1	-	-	-	-



- VESA 75 holes for solid mounting
- Complete black PC-ABS back-plate
- Screw holes for capacitive touch stylus holder

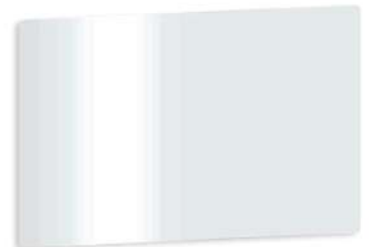
Battery (inside)



Power Supply



Plastic Screen Protector



Optional Accessories

Standard Tablet Docking Station

Product name				Tablet Docking Station			
EAN number				N/A			
Global Article Code	European Article Code	Release date (D/M/Y)	Version	Global Article Code	European Article Code	Release date (D/M/Y)	Version
3030509073	1010502266	01/10/2021	Version v1				



- Easy 9-pin holder, to charge industrial tablet
- DC-In interface with Input voltage 12V/2.4A (power supply included)
- 4 USB 2.0 ports connected to the tablet directly when mounted
- Reliable plastic case, easy to handle and mount

Capacitive Touch Stylus

Product name				Capacitive Touch Stylus			
Model number / EAN number				FTCAPSTYLUS / 6920734091065			
Global Article Code	European Article Code	Release date (D/M/Y)	Version	Global Article Code	European Article Code	Release date (D/M/Y)	Version
2020503213	1010501199	01/11/2020	Version v1				



- Easy-to-use capacitive touch stylus
- Perfect accessory for the faytech flat
- Light and durable aluminum housing
- Requires different touch firmware for tablet, download from www.faytech.com/downloads/ or contact your sales representative

Capacitive Touch Stylus Holder

Product name				Capacitive Touch Stylus Holder			
EAN number				N/A			
Global Article Code	European Article Code	Release date (D/M/Y)	Version	Global Article Code	European Article Code	Release date (D/M/Y)	Version
3030509850	-	01/03/2022	Version v1				



- Holder for clicking Capacitive Touch Stylus to back of tablet
- High quality black TPU plastic holder
- Iron connection plate for solid mounting
- Includes 3 black-coated stainless steel screws (KM2*5)

Hand Strap

Product name				Hand Strap			
EAN number				N/A			
Global Article Code	European Article Code	Release date (D/M/Y)	Version	Global Article Code	European Article Code	Release date (D/M/Y)	Version
3030509327	1010502267	01/10/2021	Version v1				



- Black leather hand holder with straps
- Comfortable, light-weight & easy to hold
- Easily mountable using the tablet corner brackets